



# Castro Street At-Grade Crossing

City of Palo Alto Rail Program

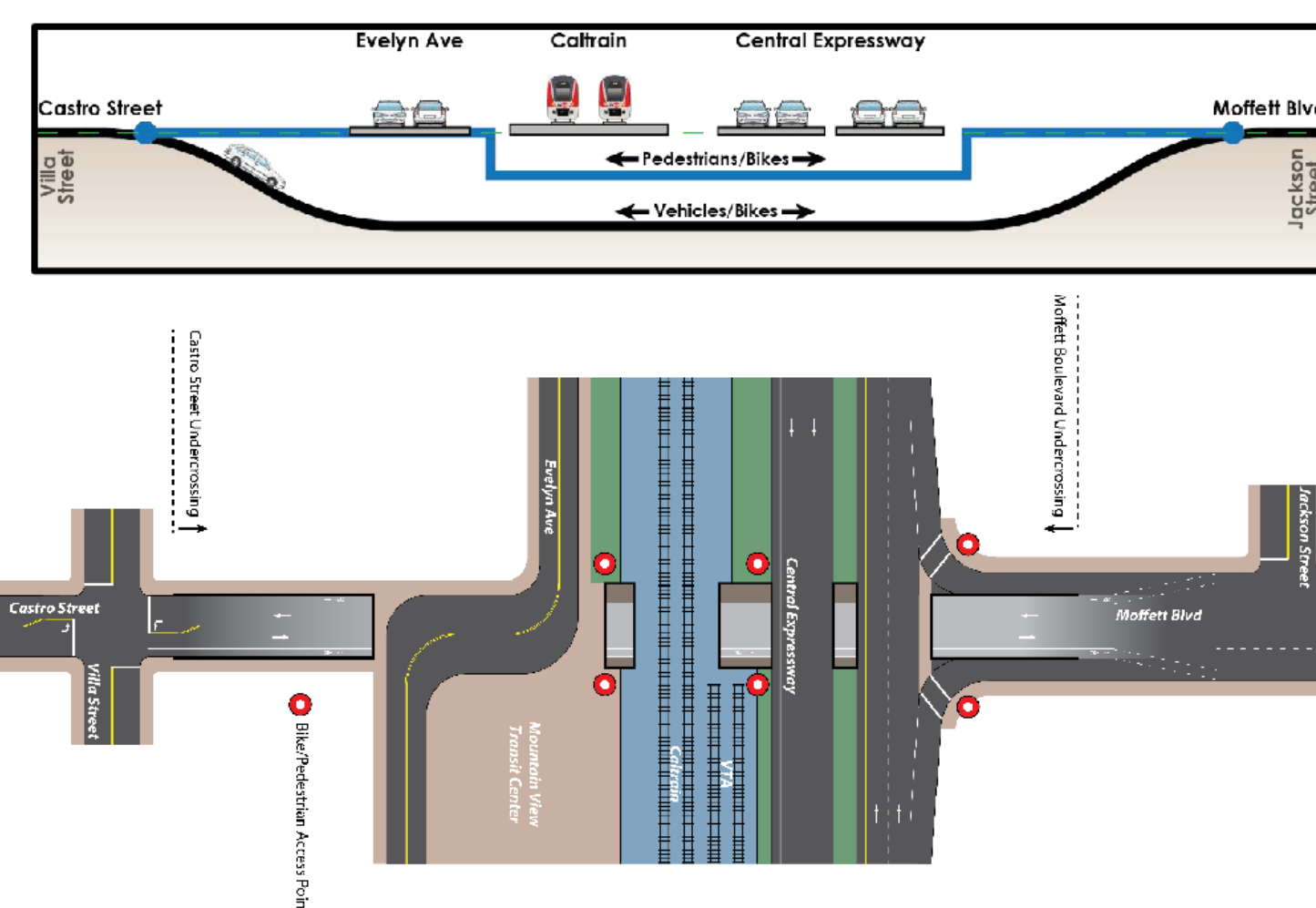
PLANNING & COMMUNITY ENVIRONMENT - TRANSPORTATION

## Castro Street Grade-Crossing Alternatives

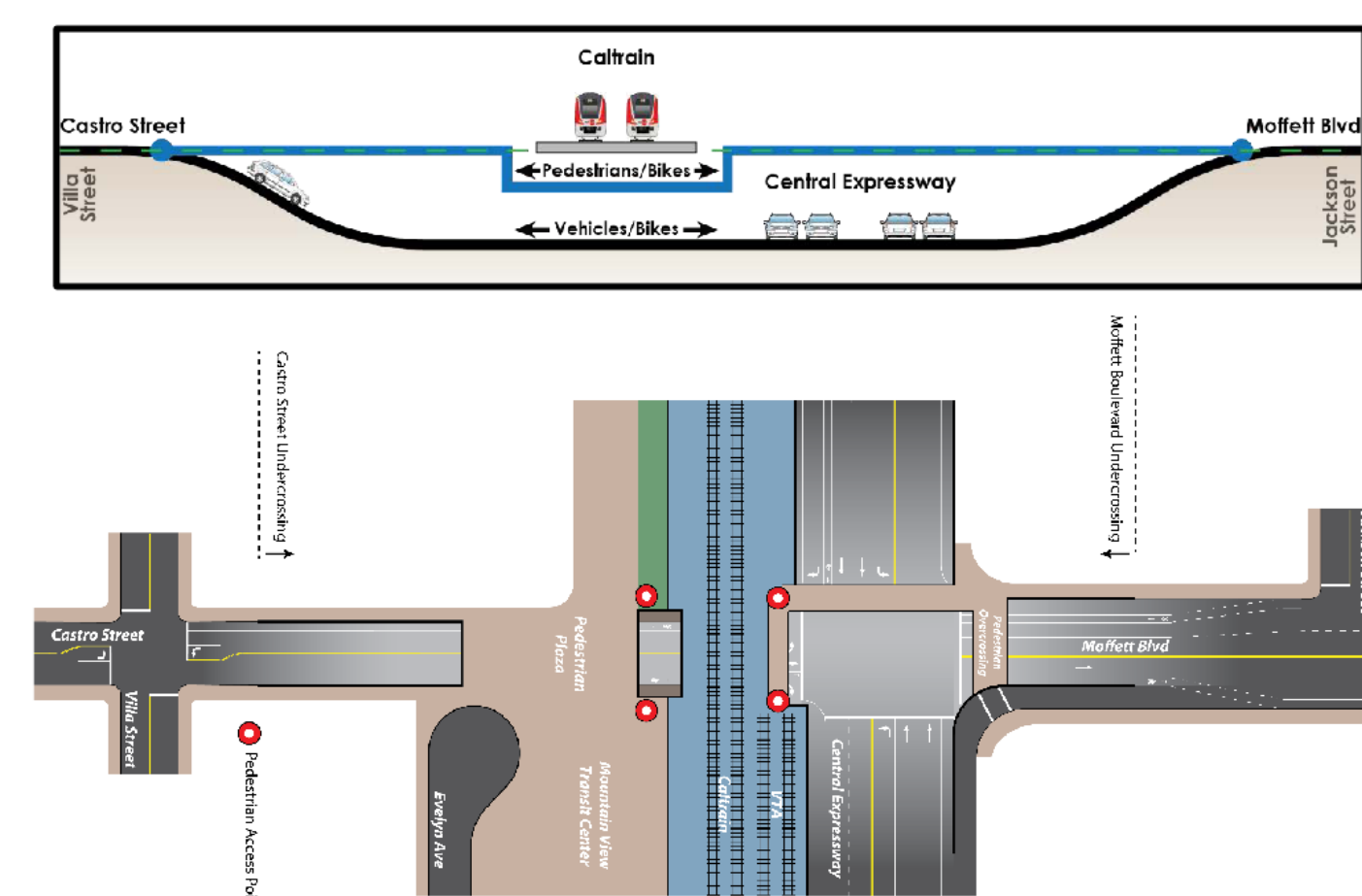
- Castro Street Grade Crossing improvement is part of the Mountain View Transit Center project, which serves as the City's key multi-modal transportation node.
- In 2015, City of Mountain View began the process of creating a master plan for Mountain View Transit Center, to make recommendations with the objectives to improve safety, capacity, and multi-modal circulation through the existing rail at-grade crossing of Castro Street, at the entrance to the transit center and downtown.
- Final concept plan and report of the master plan will be released in mid 2017.



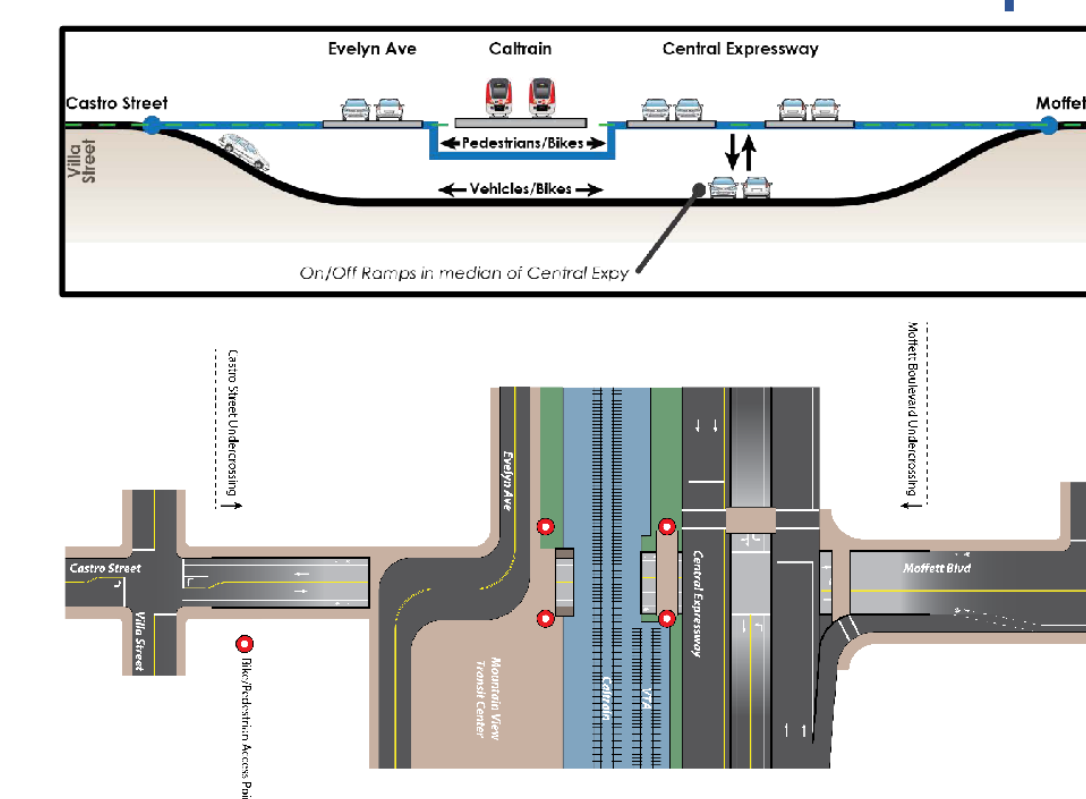
Alternative 1 – Lower Castro/Moffett



Alternative 2 – Lower Castro/Moffett & Central



Alternative 3 – Central Median Ramps



Alternative 4 – Close Castro at Tracks

